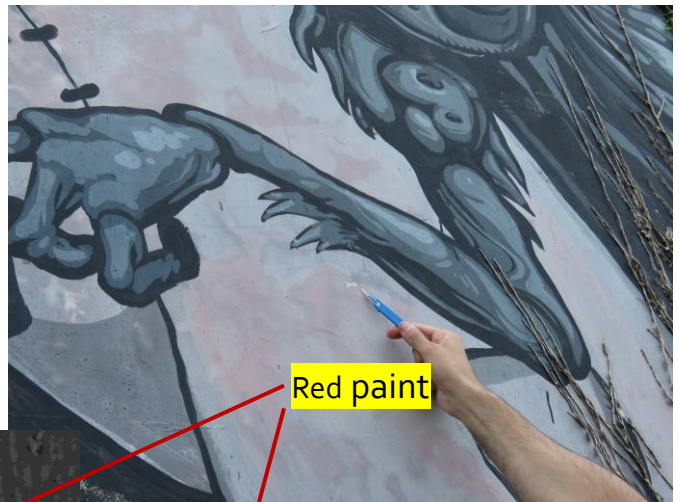


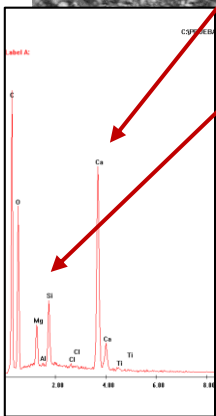
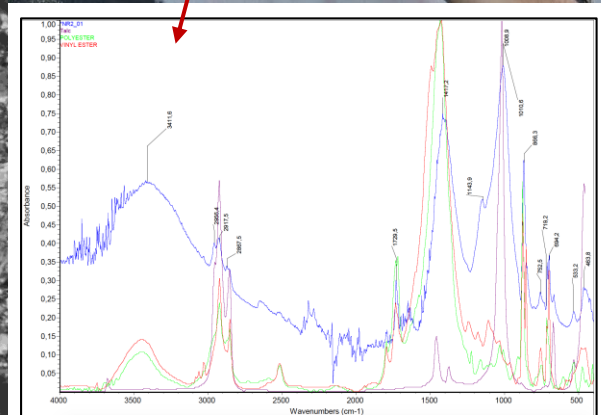
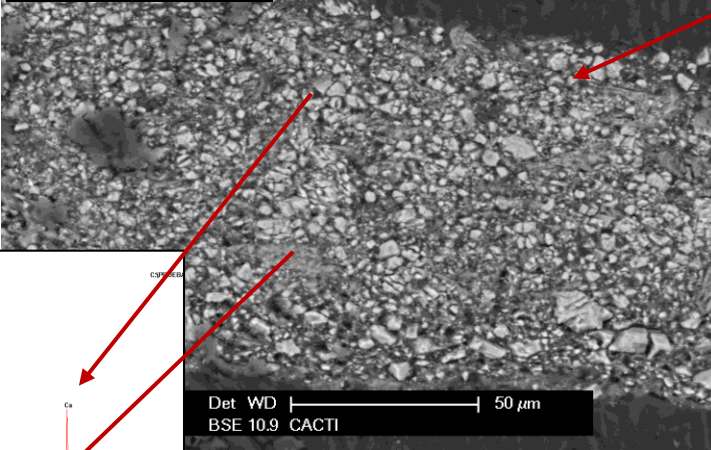
# Object 7. *Escarabajo Pelotero*-NOVE NOEL-Ordes 2012

## Characterization of MATERIALS-PAINTS and SUPPORT – January 2020

	SUPPORT	PAINTS
DESCRIPTION	Reinforced concrete plates Northwest (N40W) facing wall	Palettes of several colours. At present, no color is clearly distinguished
ANALYSIS	XRD SEM-EDS	XRD FTIR SEM-EDS
RESULTS	Aggregate –silicates Cement phase-Portland cement Very good condition	Calcium carbonate and talc as inorganic extenders  Organic phase: vinyl / ester



**SEM MICROGRAPH**



The analysis of a cross section of the paints under SEM and EDS confirms FTIR and XRD results: the lightest grains are of calcium carbonate and talc; the organic phase- dark in the micrograph- is very scarce

FTIR spectrum of the red paint. Talc and calcium carbonate –as extenders- and vinyl or ester organic phase, were identified.

This document was produced within the project ***Conservation of Art in Public Spaces (CAPuS)***.

Authors:

Teresa Rivas Brea, Enrique Alonso Villar, Santiago Pozo Antonio- UNIVERSIDADE DE VIGO (SPAIN)



Education, Audiovisual and  
Culture Executive Agency  
Erasmus+: Higher Education-Knowledge  
Alliances, Bologna Support, Jean Monnet

CAPuS project has received funding from the  
European Commission, Programme Erasmus+  
Knowledge Alliances 2017, Project N°  
588082-EPP-A-2017-1-IT-EPPKA2-KA

The European Commission's support for the production of this publication does not constitute an endorsement of the contents, which reflect the views only of the authors, and the Commission cannot be held responsible for any use which may be made of the information contained therein.